



Voetchirurgie via dagziekenhuis

Waar zijn de limieten ?

Dr. Geoffroy Vandeputte



Locale verdooving

POP block

Ingegroeide nagel

















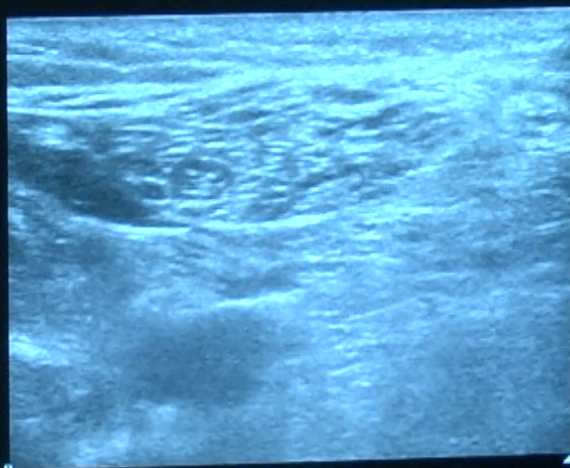
PHILIPS

Philips Healthcare

M1 0,7 11/09/2018
TIS 0,2 14:54:36

Nerve Sup
L12-5
75Hz
4cm

2D
F4
Gn 97
232dB/C6
K/4/5



G
P R
5,0 12,0



Off Size

Compress
6

Map
K

Smooth
4

Focal
Zones

SonoCT
Survey

XRes
On

Klassieke hamerteenchirurgie

Percutane voetchirurgie











Metatarsalgie





Sesamoid avasculaire necrose



Bunionette



Bunionette correctie





Morton neuroma





Hallux Rigidus







Hallux Valgus





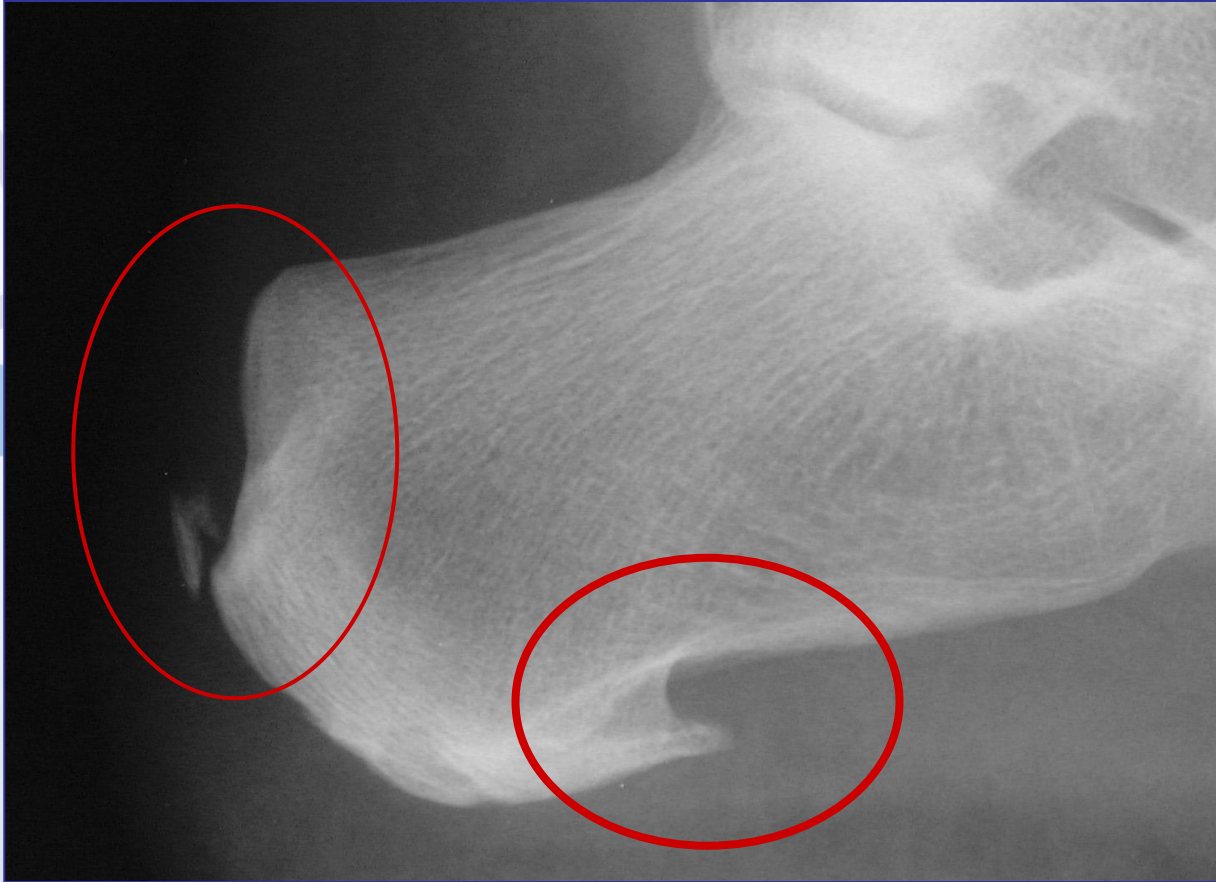
Hallux valgus correctie



- ← Akin osteotomie
- ← Distale chevron
- ← Scarf osteotomie
- ← Prox chevron
- ← Fusie TMT I



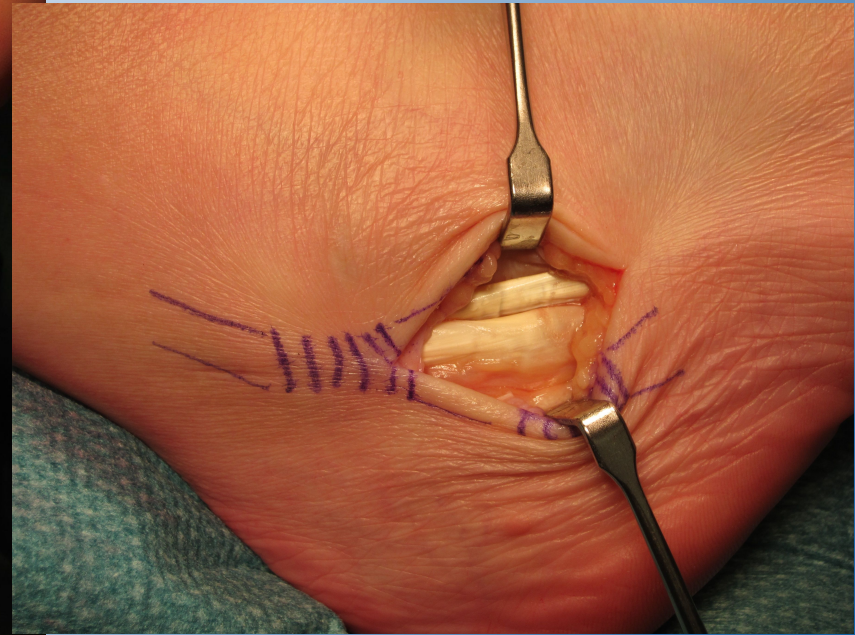
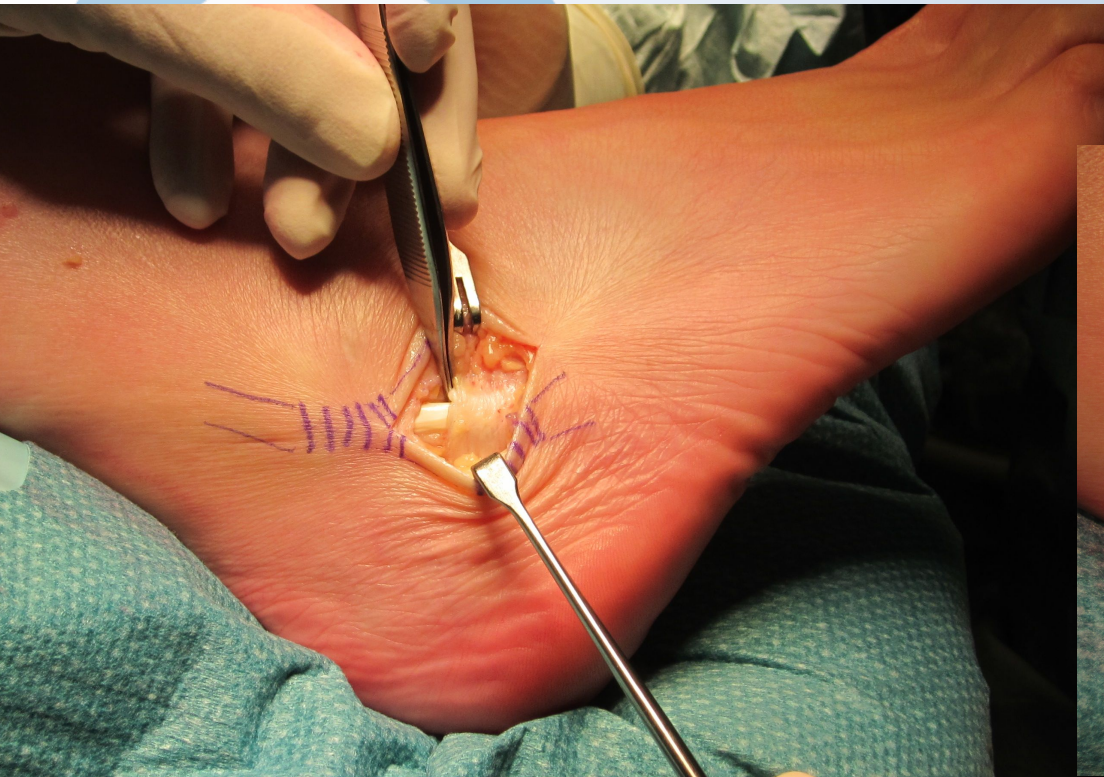


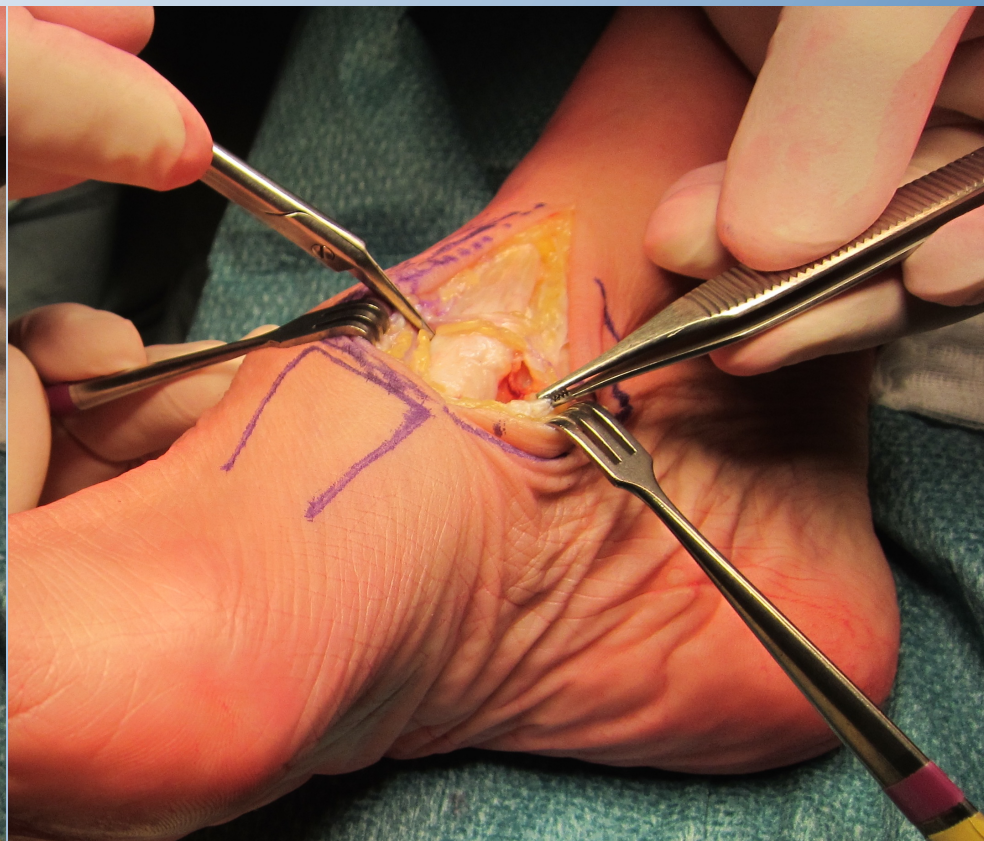







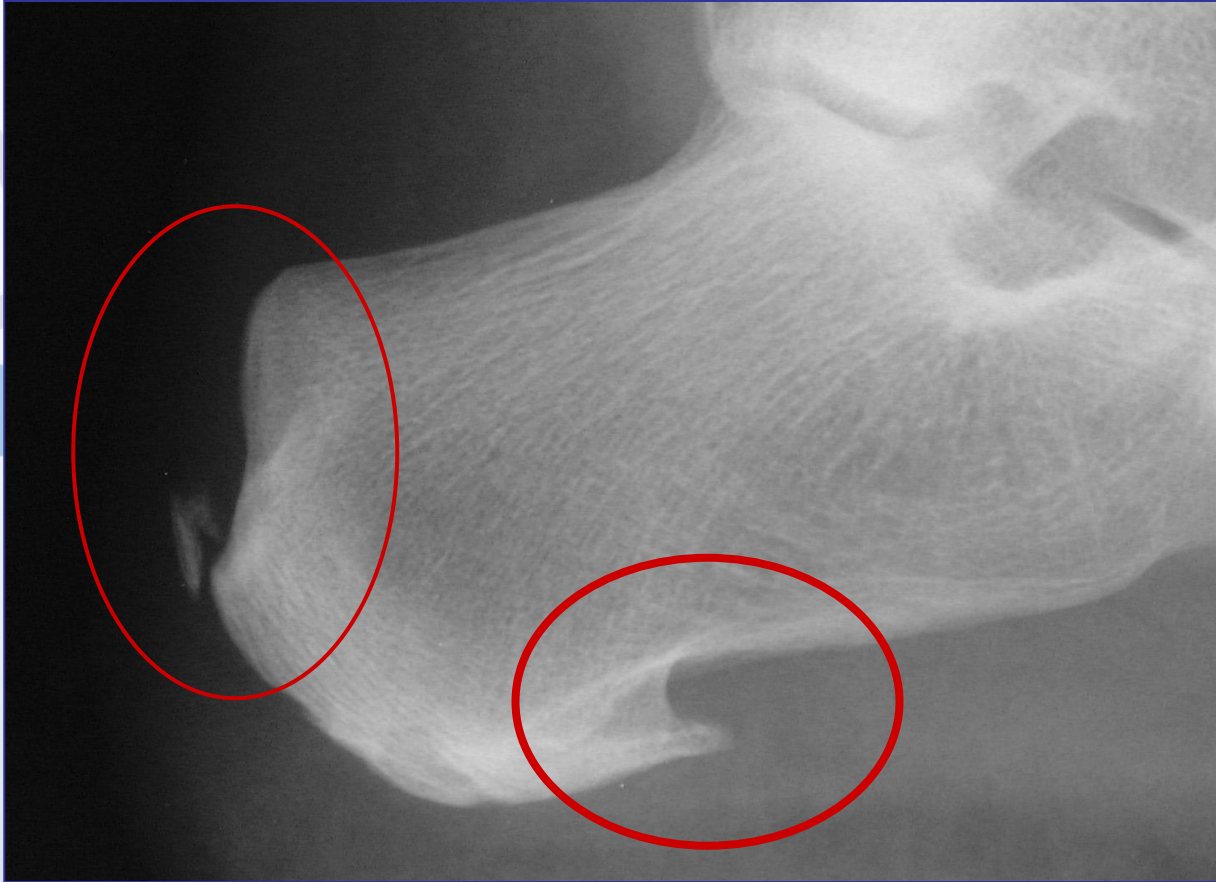


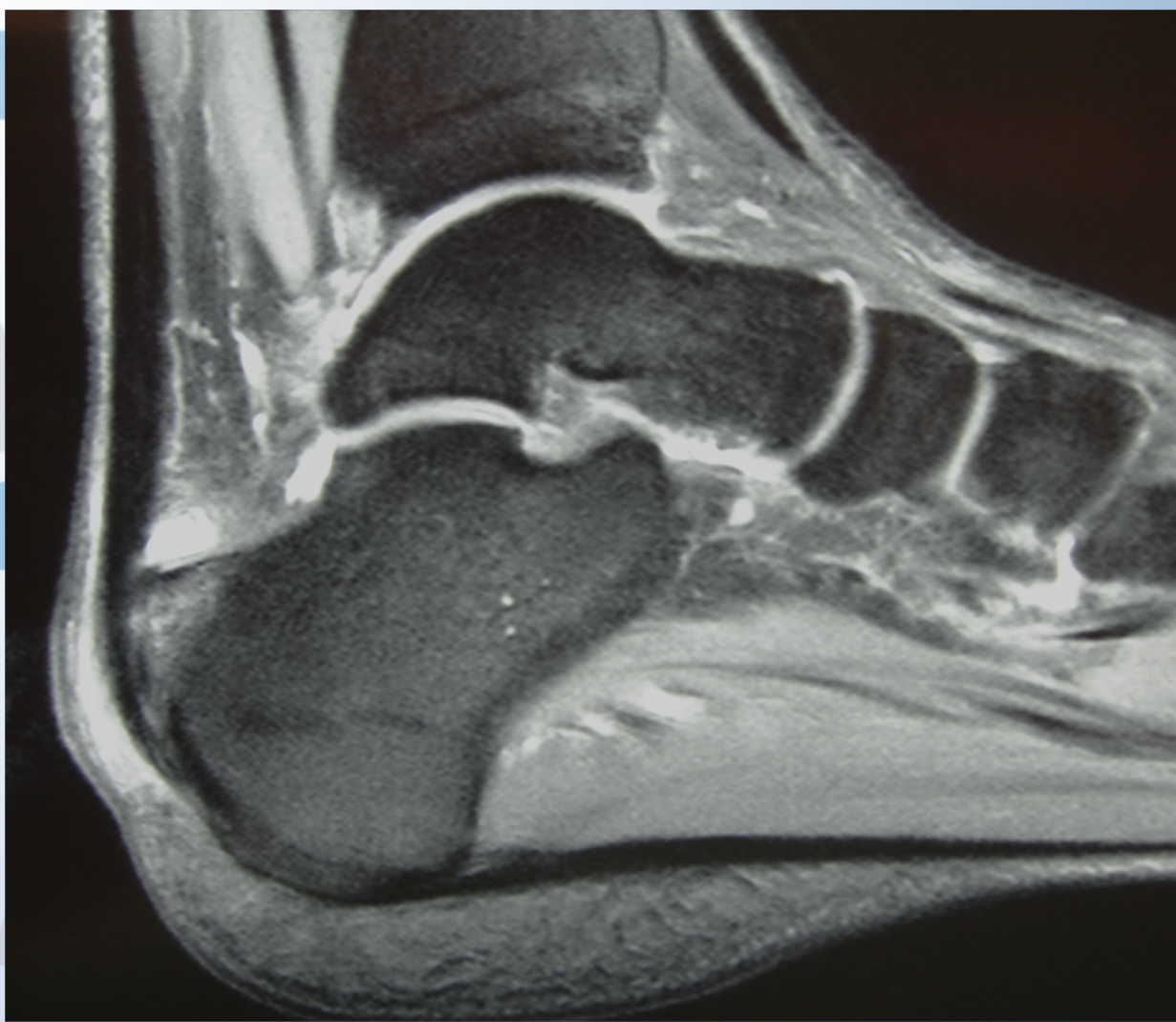






POP block + algemene



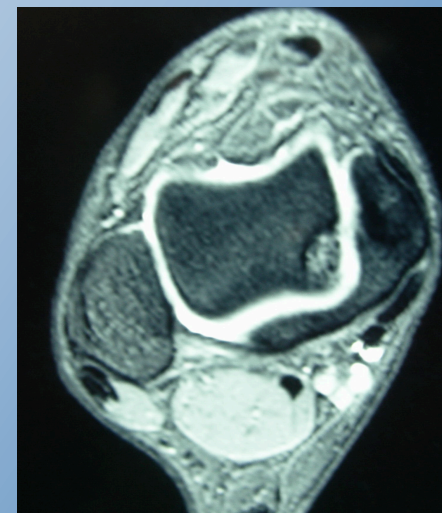
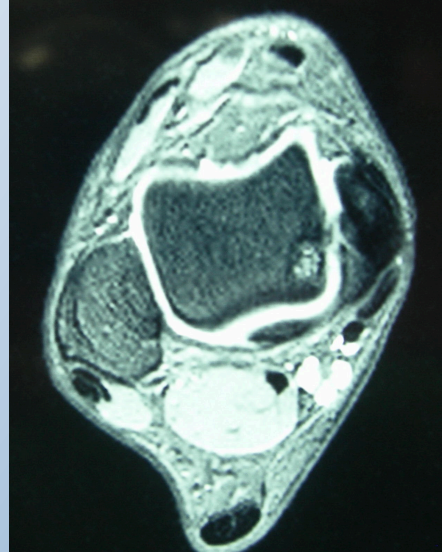




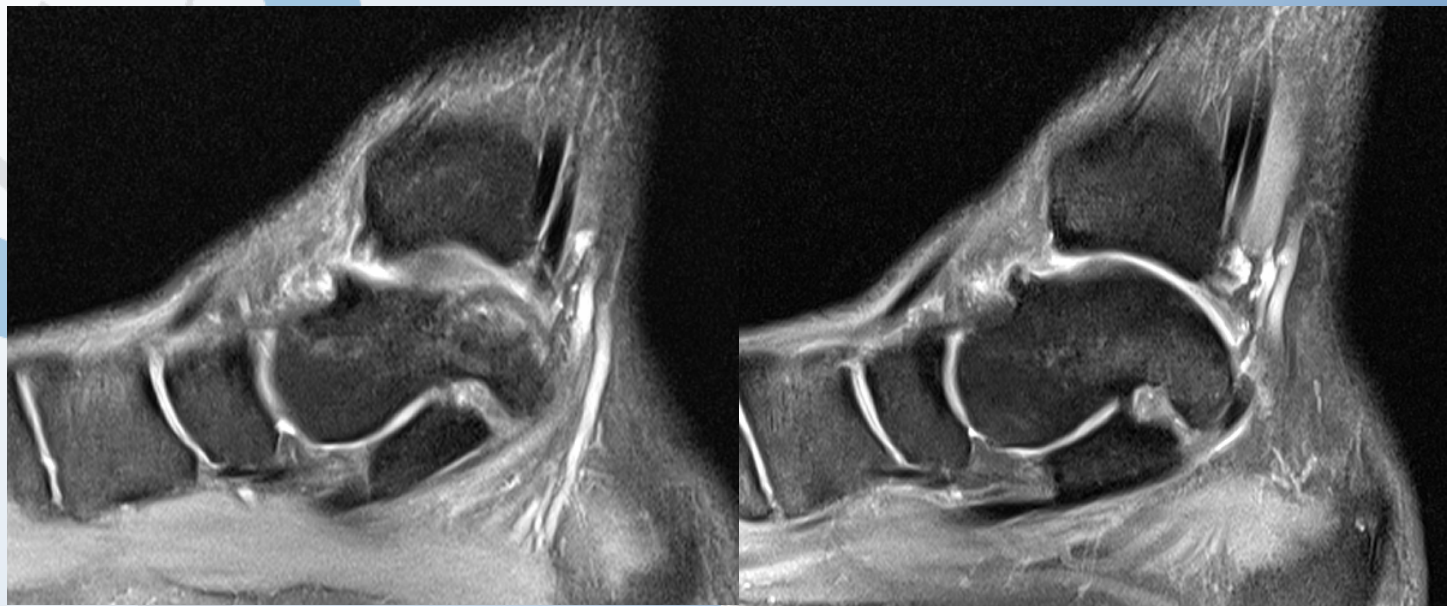


Enkel arthroscopie











Dank u voor uw aandacht.











Dank u voor uw aandacht

